

RM950



- 1 Remote control via mobile APP.
- 2 RTK positioning technology for mowing route planning.
- 3 Automatic charging.
- 4 Automatic dynamic obstacle avoidance.
- 5 Adjustable mowing speed, cutting width and cutting height.
- 6 Multi-zone management, supporting the creation of multiple working areas.

| Model | Battery Capacity | Voltage | Typical Charging Time |
|--------------------|-------------------|--------------------------|-----------------------|
| RM950 | 50Ah | 48V | 2h |
| Cutting Height(mm) | Cutting Width(mm) | Maximum Slope Capability | Working Speed(km/h) |
| 20-100 | 950 | <20 degree | 0-6 |
| Cutting Width(mm) | Blade Quantity | | |
| 950 | 3 pcs | | |

RG670



RG670-2



- ① Remote control: start & stop, cruise control, U-turn.
- ② Automatic direction correction, make sure it go in straight line, on uneven ground.
- ③ Powerful engine, with wide cutting range, work high efficiently.
- ④ Easy maintenance, convenient blade replacement design.

- ⑤ 50°slope climbing capability and passability.
- ⑥ Engine turn off automatically when machine accidental rollover.
- ⑦ Remote control distance: 200m

| Model | Engine model | Displacement(cc) | Standard power(KW/rpm) | |
|--------------------|----------------|--------------------------|------------------------|-----------------------|
| RG670/RG670-2 | LC1P92F | 452 | 9.2/3600 | |
| Fuel tank capacity | Walk speed | Engine oil tank capacity | Remote distance | |
| 5L | 0~5km/h | 1.2L | ≤200m | |
| Cutting width | Cutting height | Slope climbing ability | Weight(N.W./G.W.) | Package dimension(mm) |
| 670mm | 20~140mm | ≤50° | 310/350kg | 1300*1120*768 |



RG900



RG900-2



- ① Remote control: start & stop, cruise control, U-turn.
- ② Automatic direction correction, make sure it go in straight line, on uneven ground.
- ③ Powerful engine, with wide cutting range, work high efficiently.
- ④ Easy maintenance, convenient blade replacement design.

- ⑤ 50°slope climbing capability and passability.
- ⑥ Engine turn off automatically when machine accidental rollover.
- ⑦ Remote control distance: 200m

| Model | Engine model | Displacement(cc) | Standard power(KW/rpm) | |
|--------------------|----------------|--------------------------|------------------------|-----------------------|
| RG900/RG900-2 | LC1P96F | 608 | 11.5/3600 | |
| Fuel tank capacity | Walk speed | Engine oil tank capacity | Remote distance | |
| 7L | 0~5km/h | 2.5L | ≤200m | |
| Cutting width | Cutting height | Slope climbing ability | Weight(N.W./G.W.) | Package dimension(mm) |
| 900mm | 20~140mm | ≤50° | 400/450kg | 1500*1390*768mm |



RG900A



RG900A-2



① Remote control: start & stop, cruise control, U-turn.

② Automatic direction correction, make sure it go in straight line, on uneven ground.

③ Powerful engine, with wide cutting range, work high efficiently.

④ Easy maintenance, convenient blade replacement design.

⑤ 50°slope climbing capability and passability.

⑥ Engine turn off automatically when machine accidental rollover.

⑦ Remote control distance: 200m

| Model | Engine model | Displacement(cc) | Standard power(KW/rpm) | |
|--------------------|----------------|--------------------------|------------------------|-------------------|
| RG900A/RG900A-2 | LC2P80F | 764 | 17/3600 | |
| Fuel tank capacity | Walk speed | Engine oil tank capacity | Remote distance | |
| 10L | 0~5km/h | 3L | ≤200m | |
| Cutting width | Cutting height | Slope climbing ability | Weight(N.W./G.W.) | Package dimension |
| 900mm | 20~140mm | ≤50° | 420/470kg | 1600*1390*768mm |



RG540

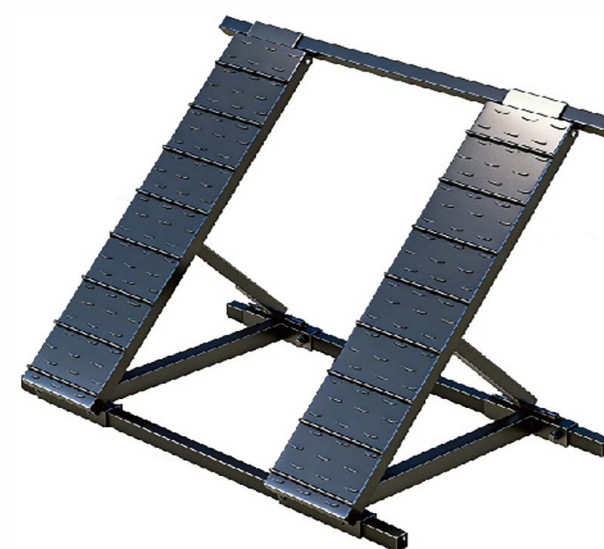
CE   Eu V



| Model | Engine model | Displacement(cc) | Standard power(KW/rpm) | |
|--------------------|----------------|--------------------------|------------------------|-----------------------|
| RG540 | LC1P75F | 224 | 4.5/3600 | |
| Fuel tank capacity | Walk speed | Engine oil tank capacity | Remote distance | |
| 1.4 | 0~5km/h | 0.5L | ≤200m | |
| Cutting width | Cutting height | Slope climbing ability | Weight(N.W./G.W.) | Package dimension(mm) |
| 510mm | 30-150mm | 0-45° | 158/206kg | 1030*970*560 |

Quick Blade Change Support Frame

Aluminum Ramp



| Model | Max. Load(Kg) | Size(mm) |
|----------------|------------------|-----------------------|
| Aluminum Ramp | 500 | 2260*280*50 |
| Net Weight(Kg) | Gross Weight(Kg) | Package Dimension(mm) |
| 10.7 | 11.5 | 1170*310*155 |

RS80D



| Model | Engine model | Displacement(cc) | Power(KW/rpm) |
|-------------------|-------------------|--------------------|-----------------------|
| RS80D | Diesel engine 192 | 499 | 9.0/3600 |
| Transmission mode | Working width(mm) | Stubble height(mm) | Working speed(km/h) |
| triangel belt | 800 | 20-200 | 0-4 |
| Blade type | Number of blades | Weight(N.W./G.W.) | Package dimension(mm) |
| hammer type | 32 | 338/368 Kg | 1610*1210*1040 |

RS100D



| Model | Engine model | Displacement(cc) | Power(KW/rpm) |
|-------------------|-------------------|--------------------|---------------------|
| RS100D | Diesel engine 192 | 499 | 9.0/3600 |
| Transmission mode | Working width(mm) | Stubble height(mm) | Working speed(km/h) |
| triangel belt | 1000 | 20-200 | 0-4 |
| Blade type | Number of blades | Weight(N.W./G.W.) | Package dimension |
| hammer type | 40 | 346/376 | 1610*1210*1040 |

RS100G



| Model | Engine model | Displacement(cc) | Standard power(KW/rpm) |
|-------------------|----------------------------|--------------------|------------------------|
| RS100G | Gasoline Engine Loncin 459 | 459 | 11/3600 |
| Transmission mode | Working width(mm) | Stubble height(mm) | Working speed(m/s) |
| triangel belt | 1000 | 20-200 | 0-4 |
| Blade type | Number of blades | Weight(N.W./G.W.) | Package dimension |
| hammer type | 40 | 328/358 | 1610*1210*1040 |

YB450/600



- ① Transporter for all-terrian, complex and rugged.
- ② 4-wheel drive suspension, strong passability, good balance.
- ③ 50° slope working capability.
- ④ One-handed remote operation, more comfortable and convenient.
- ⑤ Remote control distance: 600m.
- ⑥ Automatic parking when stop walking, high safety.

| Model | Output power | Battery voltage/capacity | Max. loading weight(kg) |
|-----------------------|----------------|----------------------------|-----------------------------|
| YB450/600 | 800-1200kw | 48V/20Ah | 450/600 |
| Max. working capacity | Working speed | Overall dimension(mm) | Basket dimension(mm) |
| 10km or 8 hours | 7~10km/h | 1500*1200*700/1750*810*400 | 1300*620*400/1750*810*400 |
| Climbing capability | Net weight(kg) | Package dimension(mm) | |
| slope <50 degree | 200/260 | 1540*640*750/1900*680*850 | 1280*1400*200/1520*1680*200 |